



**Travel with the World Affairs Council of Charlotte**  
***Discover Africa: Journey Through the Heart of South Africa,  
Botswana, & Zimbabwe***

**April 12 - April 25, 2025 (14 Days)**



**All accommodations are top of the line luxury. All breakfasts, 10 lunches, and 8 dinners are included in the cost of this once a lifetime trip.**

**\*Space is limited to 20 people\***

**Prices for the trip can be found on Page 17.**

**A nonrefundable deposit of \$500 is due as soon as possible to secure your seat for the trip.**

**Full nonrefundable payment is due by January 25th, 2025.**

**Space is limited and nearly sold out so deposits are accepted on a first come, first served basis. Contact Jeff Knight at Knight Travel for airfare quotes at [jknight0675@gmail.com](mailto:jknight0675@gmail.com). We do have a group block available. Info provided on page 17-18.**

Please contact Madison NeeSmith at the World Affairs Council of Charlotte via email or call 704-687-7758 if you have questions or need more information about the trip.

## Day 1: Saturday, April 12th, 2025

## Charlotte/Washington D.C./Cape Town

Depart from Charlotte-Douglas International Airport from Charlotte at 2:25 p.m. on a United Airlines flight, arriving at Dulles Airport in Washington D.C. then connecting non-stop to Cape Town, South Africa departing Dulles at 3:20 p.m. **Time-appropriate meals and in-flight services will be provided.**

## Day 2: Sunday, April 13th, 2025

## Cape Town

Once you arrive in Cape Town and clear customs and immigration, you will be transferred to the iconic Mount Nelson Hotel.

For the next four nights, you'll stay at the [Mount Nelson Hotel](#), in Cape Town, a luxury Belmond property with stellar accommodations that will be celebrating 125 years in 2024. The hotel is located in the heart of town and offers the perfect combination of leafy tranquility and the vibrance of the city, set among seven acres of lush, landscaped gardens beneath Table Mountain.

*“Whether dining on exotic Cape cuisine, soaking up the sun or exploring the buzzing streets, your time here promises endless memories to cherish..” (Source: Mount Nelson Hotel website)*

The remainder of the day and evening is at your leisure to recover from your trans-Atlantic journey.

- **Independent Dinner**
- **Overnight at the Mount Nelson Hotel**



[Photos: Mount Nelson Hotel \(Link\)](#)

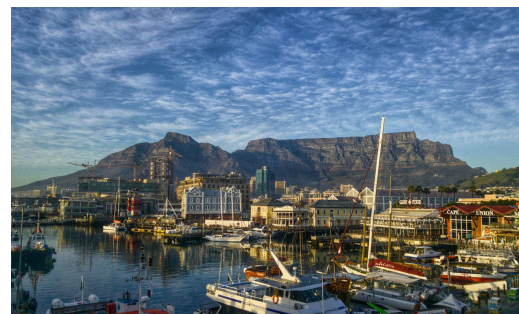
**Breakfast is included at the hotel.**

After breakfast, you'll embark on a guided full day tour of Cape Town. Start your adventure by riding the Robben Island ferry. [Robben Island](#) is located 12 kilometers offshore from Cape Town and is geographically similar to Alcatraz. Perfectly designed and naturally defended to create the ultimate prison, it was here that Nelson Mandela was imprisoned for 18 of the 27 years as a political prisoner of the Apartheid regime. In addition to seeing Mandela's cell, you will learn about how the legacy of Robben Island has been a vital building block of the new "Rainbow Nation."

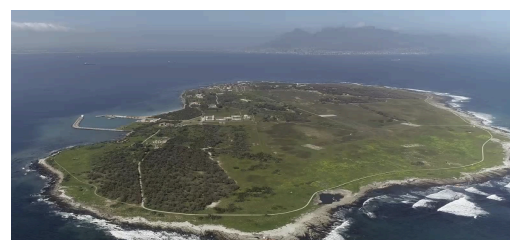
After you return to the mainland, you'll enjoy a lovely **included lunch** at a local restaurant. Afterwards, take a breathtaking ride on the Table Mountain Aerial Cable Car to the flat-topped UNESCO World Heritage Site of [Table Mountain](#) which looms over Cape Town and the Cape Peninsula.

*"Rising approximately 1,085 meters above sea level, it is a remarkable geological masterpiece formed over millions of years. The mountain's unique plateau, stretching approximately three kilometers from end to end, is a testament to the forces of nature that have shaped this awe-inspiring landmark." [Read More](#)*

In the late afternoon, you will return to the hotel before a warm welcome group dinner with wine in a local Cape Town restaurant.



[Cape Town](#)



[Robben Island](#)



[Table Mountain Cable Car](#)



- Breakfast included
- Lunch included
- Dinner included
- Overnight at the Mount Nelson Hotel



[Table Mountain](#)

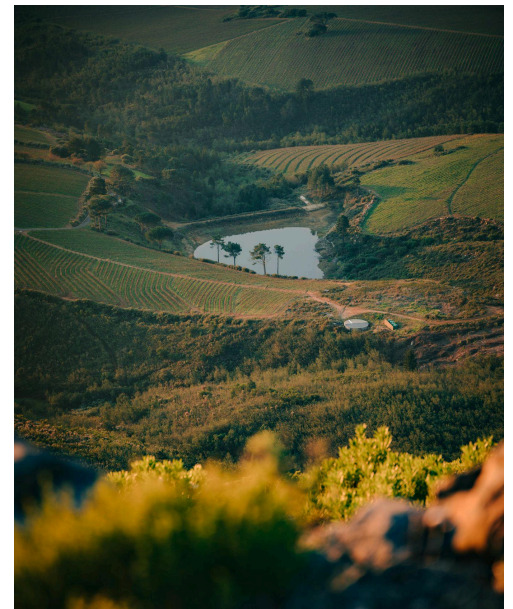
**Day 4: Tuesday, April 15th, 2025**

**Cape Winelands**

**Breakfast is included at the hotel.**

This morning, you will depart from Cape Town and embark on a scenic journey to the [Winelands](#). Outside of Cape Town, the Cape Winelands are comprised of the world-famous wine regions of Stellenbosch, Franschhoek, and Paarl, all set within breathtaking vine swept landscapes, many of them historical farms with beautiful Cape Dutch manor houses, gardens, hotels and fine-dining restaurants.

*“Framed by sun-splashed vineyards and craggy mountain peaks, the picturesque valleys of the Cape Winelands are famous for their grand old estates, pretty little towns, award-winning restaurants and – of course – for their wine. An easy hour’s drive from Cape Town, a Cape Winelands holiday perfectly complements a stay in one of the world’s favourite cities.” [Read More](#)*



[Photo: Stephan Louis Winelands](#)

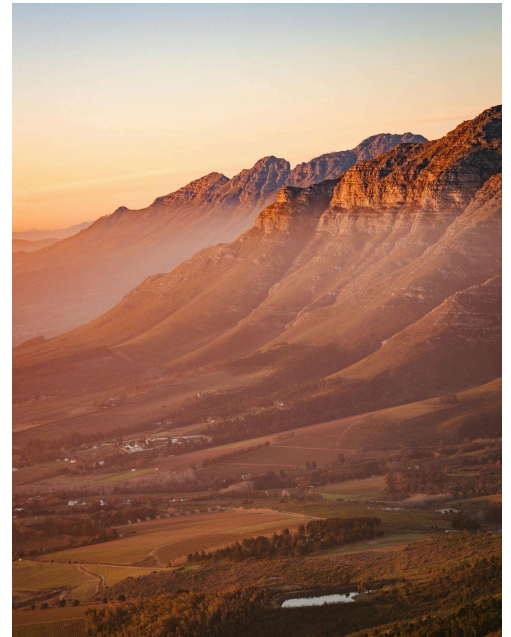


Upon arrival, experience an incredibly scenic route to the heart of the Cape Winelands where you will spend the day visiting premier wine estates in the area which is a visual feast of lush green valleys, rugged mountains, fine cuisine and naturally excellent wines. Drink in the beautiful landscapes dotted with historical buildings, learn to identify and appreciate South African wines.

Your indulgence will peak with a delicious **included lunch** and tasting at one of the wineries.

In the late afternoon, you will return to Cape Town where you will enjoy an independent evening.

- **Breakfast included**
- **Lunch included**
- **Independent Dinner**
- **Overnight at the Mount Nelson Hotel**



[Photo by: Stephan Louis Winelands](#)



Photo: Wine Tasting



[Photo by: Jeanine\\_S - Cape Winelands](#)

**Breakfast is included at the hotel.**

Following breakfast, you will participate in an unforgettable full day Cape Point tour where you will visit the infamous [Cape Point](#) situated within the Cape of Good Hope Nature Reserve. Journey along the Atlantic coast, through the Hout Bay valley and over the famous Chapman's Peak (subject to road conditions) with occasional stops at various sites of interest along the way.

In 1859 the first lighthouse was completed and still stands at 238 meters above sea level on the highest section of the peak and is now used as the centralized monitoring point for all the lighthouses on the coast of South Africa. Access to this historical building is by an exhilarating three-minute ride in the [Flying Dutchman funicular](#) (named after the Flying Dutchman ghost ship local legend) that transfers you from the lower station at 127 meters above sea level to the upper stations.

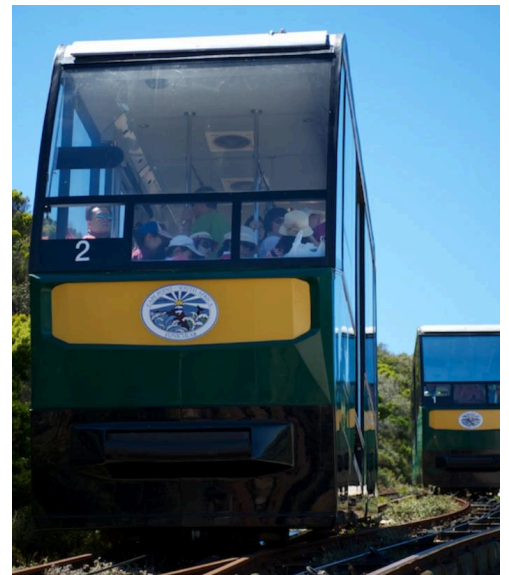
Afterwards, visit Boulders Beach with an opportunity to meet the African Penguins and enjoy an **included group lunch**.

*"Rugged rocks and sheer cliffs towering more than 200 metres above the sea and cutting deep into the ocean, provide a spectacular background for the park's rich bio-diversity. Cape Point falls within the southern section of Table Mountain National park. The natural vegetation of the areas – fynbos – comprises the smallest but richest of the world's six floral kingdoms.." [Read More](#)*

At the end of the day, return to Cape Town for a final independent dinner and evening.



[Cape Point](#)



[Flying Dutchman funicular](#)



[Photo By: Lloyd Douglas  
Boulders Beach Penguins](#)

- **Breakfast included**
- **Lunch included**
- **Independent Dinner**
- **Overnight at the Mount Nelson Hotel**



[Photo By: D\\_Van\\_Rensburg](#)  
[Table Mountain](#)

## Day 6: Thursday, April 17th, 2025

## Cape Town/Okavango Delta, Botswana

### **Breakfast is included at the hotel.**

After breakfast, we will depart for the Cape Town International Airport to catch a flight on Airlink to Maun, Botswana. Upon arrival in Maun, you will be met by a local guide and escorted to your flight on Mackair light aircraft to Sable Alley Camp (about 15 minutes - due to the size of the aircraft, multiple departures will be required and there are strict luggage restrictions).

### **Welcome to Botswana!**

Our destination, the [Okavango Delta](#), is the largest inland delta in the world, and instead of flowing into the sea, the annual flood of fresh water flows inland, spreading over 15,000 kilometers for the Kalahari sand in a maze of lagoons and channels. Its headwaters start in Angola's western highlands, with numerous tributaries joining to form the Cubango River, which then flows through Namibia and finally enters Botswana, where it is then called the Okavango. The delta forms part of the Kalahari Basin,



[Okavango Delta](#)



[Lion cubs in Botswana](#)



situated at the southern periphery of the Great Rift Valley, home to an estimated 9,000 species of flora and fauna - as such the delta is widely regarded as one of the premium destinations for game viewing. Although the periphery is semi-arid, the delta itself is a patchwork of cool clear streams, lagoons, floodplains and forested islands.

Upon arrival at the airstrip, you will be met by a Sable Alley representative and transferred to the camp (approx. 15 minutes). The Sable Alley Camp lies along the Khwai River, in the north of Botswana's Okavango Delta, where a multiplicity of habitats - from forest to riverine - is home to a plethora of wildlife. The Khwai Channel offers fantastic game viewing opportunities and is home to hippo, crocodile, red lechwe, road and sable antelope species as well as zebra, kudu and blue wildebeest. Predators include lion, leopard, wild dog and spotted hyena.

**Breakfast, lunch and dinner** are included each day at Sable Alley. Accommodations are in Standard Double Tents (only 12 tents). Activities include day and night game drives, nature walks (on request) and mokoro excursions (canoe) dependent on water levels as well as laundry services.

Remainder of the day is at your leisure to settle in, enjoy the ambiance and prepare for a game viewing activity.

- **Breakfast included**
- **Lunch included**
- **Dinner included**
- **Overnight at the Sable Alley Camp**



[Photo By: Natural Selection Website Sable Alley Camp](#)

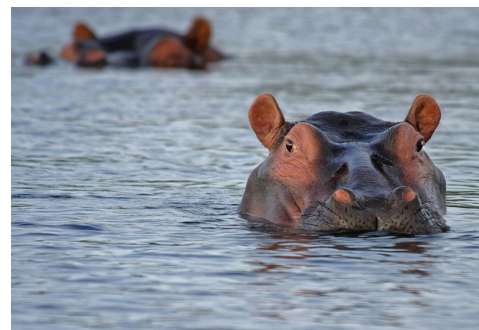


Photo: Hippos



[Photo By: Natural Selection Website Sable Alley Camp](#)

Day 7: Friday, April 18th, 2025

Okavango Delta,  
Botswana

**Breakfast is included at the camp.**

After an early morning wake-up call, you will set off on an adventurous morning drive to catch the early prowlers. Enjoy a coffee break along the way (no more than 7 passengers in each transport) and make your way back for a delicious **included breakfast**.

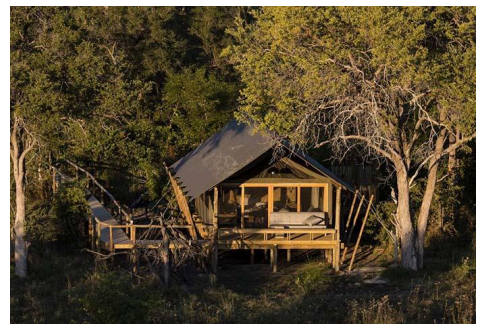
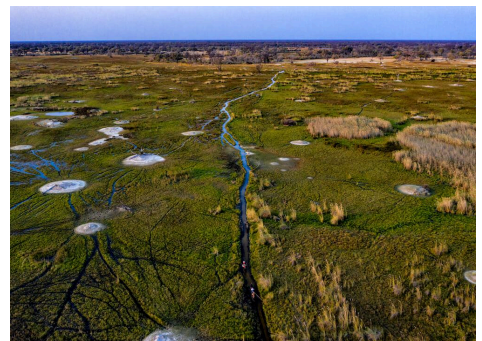
Then you will spend some lazy time enjoying your room, camp facilities, and **included lunch** before heading off later in the afternoon for an afternoon game drive.

After refreshing sundowners in the bush, head back to a mouth watering **dinner** and share stories of the day's adventures.

*"There's never a bad time to visit Sable Alley (really). There's something different in every season but, most importantly, the wildlife is out-of-this-world excellent all year round. Resident hippo splash in the inland pools, elephant and buffalo herds are hard to miss, and you're never more than a few whiskers away from a lion pride."*

[Read More](#)

- **Breakfast included**
- **Lunch included**
- **Dinner included**
- **Overnight at the Sable Alley Camp**



[Photos By: Natural Selection Website Sable Alley Camp](#)

**Day 8: Saturday, April 19th, 2025**

**Okavango Delta,  
Botswana**

**Breakfast is included at the camp.**

The Khwai Concession has more focus on land activities. Explore the area at your desired pace with adventurous day and night game drives, mokoro excursions through the Khwai River channels, bush breakfasts and sundowners in the bush.

For the birding enthusiasts, the Khwai Concession is renowned for abundant birdlife.

- **Breakfast included**
- **Lunch included**
- **Dinner included**
- **Overnight at the Sable Alley Camp**



**Photos: Elephants and Zebra**

**Day 9: Sunday, April 20th, 2025**

**Okavango Delta,  
Botswana/Victoria Falls,  
Zimbabwe**

**Breakfast is included at the camp.**

There may be time for a final morning game drive and **breakfast** before transfer back to the landing strip. Transportation will once again be via Mackair light aircraft to Kasane Airport for the land transfer and border crossing into Zimbabwe and the incredible Victoria Falls. Flight time is approximately



40 minutes. Zimbabwe does require a tourist visa which is currently USD 30 and is obtainable and payable at the crossing.

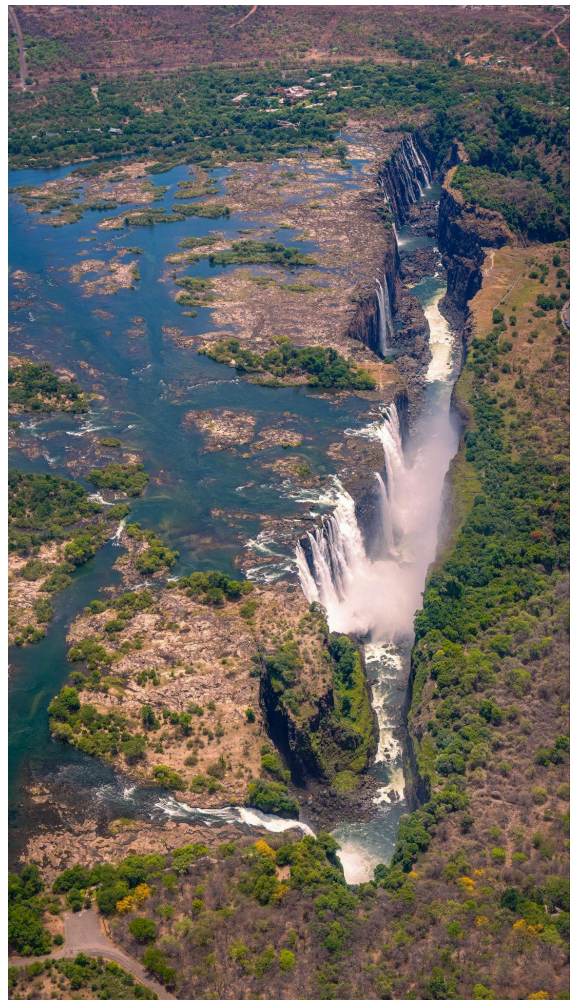
A UNESCO Natural World Heritage Site, the [Victoria Falls](#) are situated on the western tip of Zimbabwe. The Falls are known by the local Kololo tribe as Mosi or Tunya. The Smoke that thunders is one of the 'Seven Natural Wonders of the World' and one of the largest and most spectacular waterfalls on earth. The falls are 1.7 kilometers wide and nearly 550 million liters of water cascade 70 to 108 meters into the chasm below every minute during the Zambezi River's peak flow.

Victoria Falls is made of five different "falls" of which four are in Zimbabwe: the Devil's Cataract, Main Falls, Rainbow Falls and Horseshoe Falls with one, the Eastern Cataract in the bordering country of Zambia. The northern border of the park is formed by the great Zambezi River which also forms the border between Zimbabwe and Zambia for much of its length. A wide variety of larger mammals may be found within the Zambezi National Park including The Big Five: elephant, lion, buffalo, leopard and white rhinoceros. In addition, herds of sable antelope, eland, zebra, giraffe, kudu, waterbuck and impala as well as many of the smaller species of game can be viewed.

Upon arrival in Kasane, you will be met and transferred to Victoria Falls Town with a land crossing into Zimbabwe. Transfer time is approximately 2 hours and your home for the next two nights, Victoria Falls River Lodge.



[Zimbabwe](#)



[Victoria Falls](#)

[Victoria Falls River Lodge](#) is the first private game lodge to be set in the Zambezi National Park. This newly built luxury tented lodge is situated on the banks of the mighty Zambezi River so close to Victoria Falls one can see the spray in the distance. Uninterrupted panoramic views of African sunsets and exceptional wildlife viewing makes this uniquely located lodge the ideal place from which to explore Victoria Falls as it combines the safari experience with one of the world's most famous tourist destinations.

Included in your 2 night stay are all meals, local beverages and two game activities per day - a choice of either a morning/afternoon game drive in the Zambezi National Park and a sunrise/sunset river cruise in addition to other amenities.

- **Breakfast included**
- **Lunch included**
- **Dinner included**
- **Overnight at the Victoria Falls River Lodge**



[Photo By: Victoria Falls River Lodge](#)

**Day 10: Monday, April 21st, 2025**

**Victoria Falls, Zimbabwe**

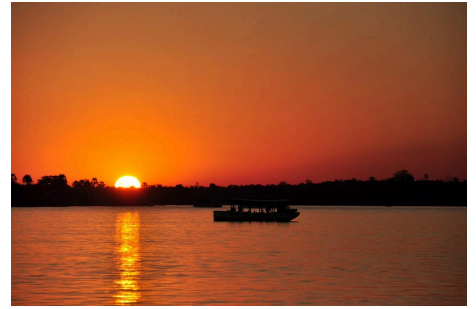
**Breakfast is included at the lodge.**

There is much more to Victoria Falls than one of the world's greatest waterfalls. There is so much to discover, and many thrilling adventure activities to take part in.



The splendor and magnitude of the mighty Victoria Falls is a site and experience not to be missed. Your safari is not complete without a sunset cruise down the Zambezi River.

- **Breakfast included**
- **Lunch included**
- **Dinner included**
- **Overnight at the Victoria Falls River Lodge**



[Zambezi River](#)

**Day 11: Tuesday, April 22nd, 2025**

**Victoria Falls, Botswana/ Kruger,  
South Africa**

**Breakfast is included at the lodge.**

Perhaps there will be time for a morning game drive and **breakfast** before departing for Victoria Falls Airport (approximately 40 minutes) to check in for your flight to Mpumalanga International Airport (approximately 1 hour 40 minutes) on a scheduled air carrier.

Upon landing, you will be transported to Sabi Sands by CessZani Aviation light aircraft (approximately 25 minutes) to your home for the next two nights, Sabi Sand Game Reserve.





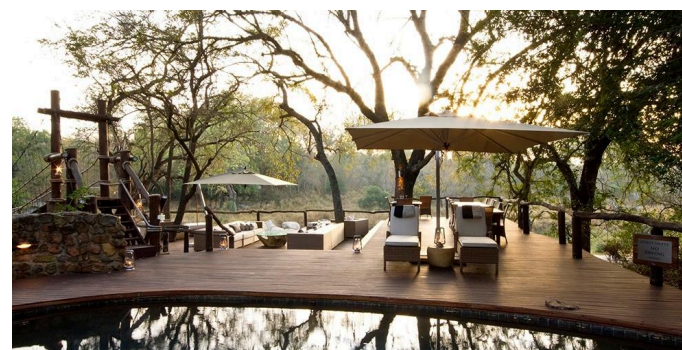
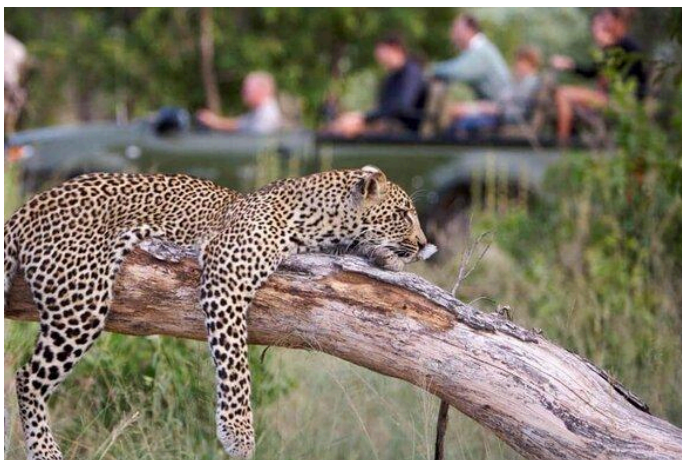
The [Sabi Sands Game Reserve](#) is a 65,000 hectare private reserve, pioneered by local landowners and conservation enthusiasts in the 1950's. It shares its unfenced 50-kilometer eastern border with Kruger National Park. Home to the Big 5, and particularly famous for regular sightings of the elusive leopard, Sabi Sands Reserve is one of the most game-rich parks in southern Africa. Named for the two rivers that run through it Sabie River and Sand River, the reserve is home to great numbers of diverse game and more than 300 bird species.

Upon arrival at the airstrip, you are met by a Bush Lodge representative and transferred to the lodge (approximately 30 minutes).

Sabi Sabi Private Game Reserve, situated in the Sabi Sand Game Reserve in the south-western section of the Greater Kruger National Park, is a wildlife oasis. Deep in the bushveld overlooking a waterhole and an open plain, lies a lodge that pulses to the rhythm of Africa's heartbeat. This is Bush Lodge, steeped in tradition, vibrant and warm, the Sabi Sabi of today. With a history spanning over 35 years, the lodge has earned a reputation of a "luxury home in the bush", service excellence and effortless personal attention.

While at Sabi Sands, all meals are included along with morning and evening game drives along with many other amenities.

After getting settled, perhaps there is time



for an evening game drive (depending on flight schedules) and **dinner**.

- **Breakfast included**
- **Lunch included**
- **Dinner included**
- **Overnight at the Sabi Sands Game Reserve**



[Photos By: Sabi Sands Game Reserve of property](#)

**Day 10: Wednesday, April 23rd, 2025**

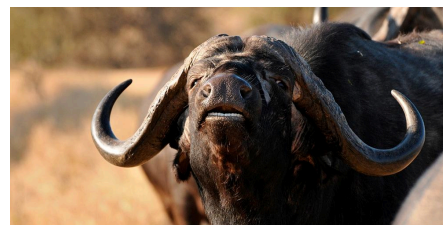
**Sabi Sand Game Reserve**

**Breakfast is included at the reserve.**

Your day starts with an early wakeup call and a hot beverage before you set out onto a thrilling game drive. This is the perfect time to catch the early prowlers, with the birds singing, the morning dew and the scents of the reserve serenading you.

Return to the camp mid-morning for a delicious **breakfast** and some relaxation time. Soon after **lunch**, you will head out on an afternoon drive and enjoy sundowners with the sun setting in the horizon. Back at the lodge, a delicious **dinner** awaits you.

- **Breakfast included**
- **Lunch included**
- **Dinner included**
- **Overnight at the Sabi Sands Game Reserve**



[Photos By: Sabi Sands Game Reserve of property](#)

**Day 11: Thursday, April 24th, 2025**

**Sabi / Johannesburg /  
Newark**

**Breakfast is included at the reserve.**

This morning, enjoy a final game drive, followed by **breakfast**. All too soon, it is time to leave this bush paradise and begin the journey home.

Soon after breakfast it will be time to leave for the Skukuza Airport (approximately 2 hours) for your scheduled flight to Johannesburg O.R. Tambo International Airport, arriving at 3:40PM. The blocked group flight will be on United Airlines departing Johannesburg at 8:00 p.m. and arriving nonstop into Newark International Airport at 6:15 a.m. the following morning. Time appropriate meals served in flight.

- **Breakfast is included**



[Zimbabwe](#)



[Antelope](#)

**Day 12: Friday, April 25th, 2025**

**Newark / Charlotte**

After landing at Newark Airport and clearing US Customs and Immigration, connect to the United Airlines flight to Charlotte departing at 10:00 a.m., arriving at 11:48 a.m.

**WELCOME HOME!**



## LAND-ONLY PRICE PER PERSON BASED ON DOUBLE OCCUPANCY\*

\*\*Single occupancy rate available for \$2,600.00\*\*

All accommodations are top of the line luxury. All breakfasts, 10 lunches, and 8 dinners are included in the cost of this once a lifetime trip.

**\*Limited to 20 people\***

**\*Trip nearly sold out, limited space - submit payments asap to secure your spot\***

<b>Min. 15 Travelers</b>	<b>Min. 20 Travelers</b>
<b>\$15,545.00</b>	<b>\$14,175.00</b>

**A Nonrefundable deposit is required by October 15th, 2024**

<b>Min. 15 Travelers</b>	<b>Min. 20 Travelers</b>
<b>\$3,500.00</b>	<b>\$3,250.00</b>

### AIR TRAVEL:

Please contact Knight Travel for air travel pricing at [jknight0675@gmail.com](mailto:jknight0675@gmail.com). **There is a group block available for the roundtrip United Airlines flights from Charlotte which includes fare, fuel, and tax for \$1,592.00 (separate price to the trip price).** If interested in the group block flights, Jeff needs to know as soon as possible. Additionally, you still have the option to book your own flights and/or upgrade to business or first class. If you need help, please contact Jeff directly.

**An additional air ticket on Airlink Airlines within Africa is required for this trip for 3 legs:**

**Cape Town/Maun  
Victoria Falls/Kruger Mpumalanga International  
Skukuza/Johannesburg**

**Cost of the additional local air travel airline ticket is \$850.00 and includes one checked bag**

The cost of the Mack Air light shared aircraft flight is included in the land price. Please note that all inter-camp flights are subject to multiple pick-ups and drop-offs enroute to the destination. Most aircraft are 8 seaters. All guests traveling on Mack Air shuttle flights are entitled to one free piece of checked luggage and one small carry on item.

**Luggage Restrictions:**

- **Maximum hand luggage is 5 kilograms (11 pounds and 1 piece allowed) which is part of the 20 kilograms (44 pounds) total luggage limitation.**
- **Maximum checked in luggage size is 12 inches wide X 14 inches high and 28 inches long.**
- **Strictly soft sided bags only, no wheels or frames or rigid sides.**
- **Due to the strict regulations on baggage, the camps include laundry service and it is included in the land price,**
- **Note that passports must be valid for at least 6 months after completion of the trip and should have sufficient blank passengers for visas and immigration stamps.**
- **South Africa: Requires two blank opposing pages in your passport - no visa necessary**
- **Botswana: Requires at least three blank pages in your passport - no visa necessary**
- **Zimbabwe: Requires 2 blank pages in your passport - visa required but will obtain at the border crossing for USD \$30 payable at the border,**

- **There are currently no required vaccinations for this trip. It is suggested that you consult with your personal physician about anti-malaria precautions and other recommended inoculation and vaccinations before travel.**

Travelers must be members in good standing with the World Affairs Council of Charlotte. If you are not a member, please contact [mneesmit@charlotte.edu](mailto:mneesmit@charlotte.edu) or call 704-687-7758. [Click here](#) for information on WACC memberships. Please note WACC memberships are fully tax-deductible.

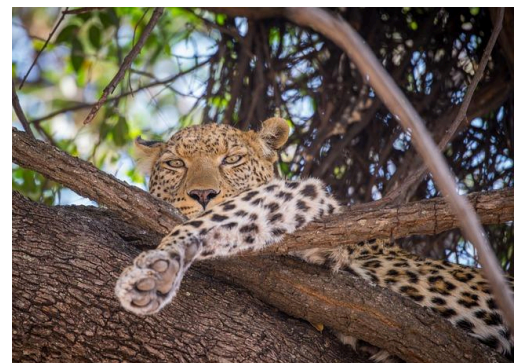
- **Final full payment is due by January 25th, 2025.**
- If you are traveling alone but would like a roommate, please let us know as soon as possible, and we will work on matching you with another traveler.
- Business or First Class air travel is available. If you are interested in an upgrade, please contact Jeff Knight ([jknight0675@gmail.com](mailto:jknight0675@gmail.com)) as soon as possible.
- Please note that a 3.5% processing charge will be added to all payments via American Express, and a 3% processing charge will be added to all other credit card payments due to a travel agency requirement. **There is no additional charge if you pay by check.**
- Checks should be mailed to "World Affairs Council of Charlotte, 9201 University City Blvd, CHHS 227, Charlotte, NC 28223."



[Photo By Daniele\\_K Zebras](#)



[Photo By: Krissiegwynne Penguins](#)



[Photo By: tonyo\\_au Leopard](#)